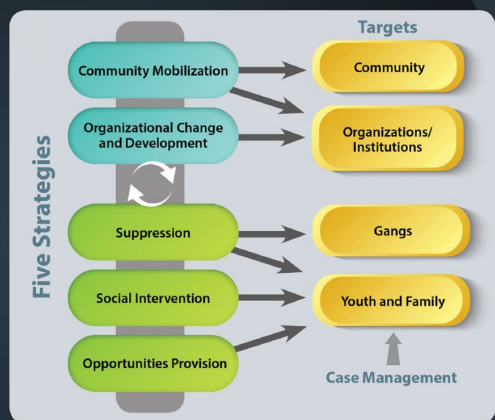


The **Comprehensive Gang Prevention, Intervention and Suppression Model** (referred to herein as the Comprehensive Gang Model) is based on a nationwide assessment of youth gang problems and programs funded by the federal Office of Juvenile Justice and Delinquency Prevention (OJJDP).

Conducted in the late 1980s, this study identified the main strategies commonly used and viewed favorably by communities responding to gang problems. These strategies have been further developed and interrelated in the OJJDP Comprehensive Gang Model and are displayed below.



**Community Mobilization:** Involvement of local citizens—including former gang youth, community groups, agencies, etc.—joined with the coordination of programs and staff functions within and across agencies.

**Social Intervention:** Outreach of youth-serving agencies, schools, grassroots groups, faith-based organizations, law enforcement and other juvenile/criminal justice organizations to gang-involved youth and their families to link them with the conventional world and needed services.

**Opportunities Provision:** The development of various education, training and employment programs targeting gang-involved youth.



# COMPREHENSIVE GANG MODEL

Prevention  
Intervention  
and Suppression

## Contact Us

Calen Robertson

Project Manager

[crobertson@esd101.net](mailto:crobertson@esd101.net)

509-789-3702



2424 E. Riverside Avenue  
Spokane, Washington  
99202



[www.esd101.net](http://www.esd101.net)



NorthEast Washington  
Educational Service District 101



# Spokane Service Team

## YOUTH GANG PREVENTION & INTERVENTION SERVICES

Our objective is to serve local at-risk individuals (ages 18 and younger) in the following ways:

- Provide and receive **referrals** to meet individual needs such as housing, mental health, employment, counseling, education, etc.
- Creative **individualized intervention plans** for youth and their families.
- Foster healthy youth community engagement by providing **positive social and recreational spaces**.
- Offer avenues for **employment training** and **credential attainment** to encourage **increased career development** and **mobility**.

As a member of the **Safe Communities Partnership/Safe Streets Partnership Steering Committee**, we will work in tandem with several key agencies committed to investing in youth and their families to reduce gang activity and create safer local communities.

### Local partnering agencies include:

- Spokane Police Department
- Department of Corrections Gang Unit
- Spokane County Juvenile Court
- Department of Children Youth and Families
- Safe Streets Task Force
- NEWESD 101 Open Doors Youth Re-engagement program
- Community leaders

